

# FLOOD SAFETY: HIGH WATERS, HIGH STAKES

Flooding can occur anywhere, but water and electricity don't mix. Because electrical hazards may linger after flood waters recede, it's important to take precautions before, during, and after flooding takes place.



## KNOW THE DANGER



On average, more **deaths** occur due to flooding each year than from any other severe weather related hazard.



In the past 5 years  
**ALL 50 STATES**  
have experienced  
floods or flash floods.



A car can easily be carried away by just **TWO FEET** of floodwater.

Nearly half of all flood fatalities occur in **vehicles**.



Those living **outside** of mapped "high-risk" flood areas file nearly 25% of all flood insurance claims and receive 1/3rd of Federal Disaster Assistance aid.



From 2003 to 2012, total flood insurance claims averaged nearly **\$4 BILLION** per year.



**\$4 BILLION**

per year.



An area's risk of flood can **change over time** due to new construction, changes in levee classification, or other environmental factors.



ON



OFF

Follow any directives to **turn off** utilities. If you're advised to switch off the main power source to your home, flip each breaker and **THEN** turn off the main breaker. You may also need to shut off the main valve for your home's gas and water.



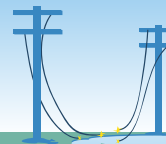
## REDUCE THE RISK



**Fuel your automobile** before any forecasted storms. If electric power is lost, gas stations may be unable to pump gas.



Be aware that submerged outlets or electrical cords may **energize standing water**. Do not enter a flooded area until it has been determined safe to do so by a professional.



Do not go near any **downed power lines** especially if there is standing water nearby.

If your home experienced flooding, keep the power off until an **electrician** has inspected your system for safety.



Have an electrician inspect electrical appliances that have been wet, and **do not turn on or plug in appliances** unless an electrician tells you it is safe.



A **trained professional** may be able to recondition some devices while others will require replacement.



Do not touch a circuit breaker or replace a fuse with **wet hands** or while standing on a wet surface.

## REMINDER



ESFI recommends portable generators be installed by qualified electricians. When not used properly you could be at risk for shocks, fires or dangerous levels of carbon monoxide.

ESFi

For more severe weather and portable generator safety tips visit [www.esfi.org](http://www.esfi.org).



[www.facebook.com/ESFI.org](http://www.facebook.com/ESFI.org)



[www.twitter.com/ESFI.org](http://www.twitter.com/ESFI.org)



[www.youtube.com/ESFI.org](http://www.youtube.com/ESFI.org)